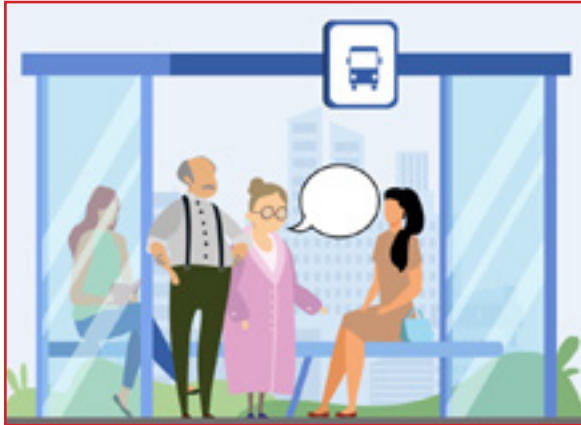


UNIT 13: ON THE BUS



SITUATED ENGLISH STUDY & LEARN

2021-1-PL01-KA220-ADU-000033465



**Co-funded by
the European Union**

Funded by the European Union. Views and opinions expressed are however those of the author(s) only and do not necessarily reflect those of the European Union or the European Education and Culture Executive Agency (EACEA). Neither the European Union nor EACEA can be held responsible for them.

SECTION A

KEY VOCABULARY

Bus station

Bus ticket

Bus stop

Bus driver

Seat

Bus lane

Timetable

Bus

Ticket machine

Passenger

Hand rail

Wheelchair ramp

Banknotes - coins

Route map



SECTION B

What you might hear and see

- The next stop is Trieste.
- Would you like a one-way or return ticket?
- This seat is for the elderly.
- You need to press the button to stop the bus.
- You are on the wrong bus.
- You should take the number 12.
- You need to stamp your ticket.
- You aren't allowed to eat anything on the bus.

SECTION C

What you might need to SAY or ASK in this place

	Hello Good morning Good afternoon
	Thank you
	Excuse me! I want to go to the airport. Which bus should I take? Which is the bus going to Porto? What time is the next bus to Brussels? Where is the bus stop? Do you have a bus timetable? What's the best way to get to Prague by bus? What time does the last bus for Amsterdam leave?
	Do you know when the next bus is coming? Does this bus go to the city center?
	Could you tell me where to get off, please? Do I need to get off here? Could you tell me when we get to Diamond Park, please? Have we passed Angel Street? Where do I get off for the National Museum? How much is the return ticket?
	Good bye Have a good day

SECTION D

Basic Dialogues for Bus

At the bus stop



Passenger 1: Excuse me, can I ask you something?

Passenger 2: Yes, sure.

Passenger 1: I would like to go into town but I am not sure what bus to take.

Passenger 2: The line 204 will take you into town.

Passenger 1: Do you know when the next bus will arrive?

Passenger 2: They arrive every 10 minutes. Look, there's 204!

Passenger 1: Thank you so much for your help.

Tourist: Excuse me! Could you help me, please?

Passerby: What can I do for you?

Tourist: We would like to go to the National Art Gallery?

Passerby: Ah! That's near the town center.

Tourist: Do you know how to get there by bus?

Passerby: Yes, take bus number 13.

Tourist: That's really helpful. Thank you.

Passerby: You're welcome. Good luck.

Tourist: Excuse me. There is a long line at the stop. What is the line for?

Passerby: The line is for bus 402. It goes to the airport.

Tourist: How often does the bus run?

Passerby: The bus runs every 15 minutes.

Tourist: Hello, excuse me.

Passerby: Yes, what can I do for you?

Tourist: Do you know when the next bus will come?

Passerby: Which bus will you take?

Tourist: I'll take the bus that goes to the airport.

Passerby: Oh, the airport bus? There's only a bus every 45 minutes. That bus just left 5 minutes ago.

Tourist: Oh! I'm going to be late now.

Passerby: What time is your flight?

Tourist: My flight is in two hours.

Passerby: Oh, you may not make it in time if you wait for the bus. You had better take a taxi. It only takes 20 minutes to get to the airport.

Tourist: Yes, I think I should take a taxi. Thank you so much for the information.

Passerby: No problem. Have a nice flight.

SECTION D

Basic Dialogues for Bus

At the ticket office



Tourist: Hello! I am new to this city. Can you tell me which bus goes to Green Park?

Ticket office: Sure. You can take route 14A or 21A, whichever one comes first.

Tourist: Are these direct lines or do I need to change elsewhere?

Ticket office: No. Both buses are direct.

Tourist: That's great. When can I expect them?

Ticket office: 14A should be here in 2 minutes.

Tourist: Thanks for your kind help.

Ticket office: You're welcome. Have a nice day.

Missing the bus stop

Tourist: Excuse me. Does this bus stop at Berkeley Street?

Bus driver: Yes, it does. Is that your stop?

Tourist: Yes, it is.

Bus driver: I am sorry. But the bus has already passed Berkeley Street.

Tourist: What? Really? I missed my stop.

Bus driver: You can get off at the next stop and walk back.

Tourist: How long will it take?

Bus driver: Around 5 minutes.

Tourist: I'll do that then. Thanks for your help.

Transfer to another bus

Bus driver: There is no direct bus to the central train station. You need to transfer to another bus.

Tourist: Could you explain it to me, please?

Bus driver: Sure. You need to get on bus 22 first. Then, get off at Vinci 10, then cross the road. And then you should catch bus 99.

Tourist: Do I have to pay the fare again?

Bus driver: No, you don't if it is within 30 minutes.

Tourist: Thank you for your help. Good bye.

On the Bus

Tourist: How much is the bus fare?

Bus driver: It is 90 cents.

Tourist: I am afraid I don't have enough change. Could you give me change for a 50?

Bus driver: Sure.

Tourist: Thank you so much.

Tourist: Excuse me. I want to go to the airport. Is this the right bus?

Bus driver: Airport? No, you are on the wrong bus.

Tourist: Oh, no! What should I do now?

Bus driver: Get off here, cross the road and take bus 77. That one goes to the airport.

Tourist: Cross the road and take bus number 77?

Bus driver: Yes, exactly.

Tourist: Thank you very much. Bye!

FINAL STEP

Exercises

.....

Fill in the Dialogue below.

Tourist: Excuse me. What time does the last bus leave?

Ticket officer:

Tourist: How long does it take?

Ticket officer:

Put a tick next to the statements you say or hear when taking a bus.

.....The next bus is in ten minutes.

.....Enjoy your meal.

.....How much is the bus fare?

.....Get off at the next stop.

.....I'll be right back with your orders.

.....Have a nice flight.

.....Press the stop button.

FINAL STEP

Exercises

Dialogue at the ticket office: Elene and Erasmus would like to go to the airport by bus and Erasmus is buying bus tickets.



Read the dialogue below and fill in the blanks with the most appropriate option.

- a) How many tickets do you need?
- b) About 35 minutes.
- c) Here you are.
- d) Is it a direct bus?
- e) How much is the bus fare?
- f) Which bus should we take?

Erasmus: Good afternoon. We would like to get to the airport.
..... ?

Tourist office: You should take the number 10.

Erasmus:?

Tourist office: It is 8 euros per person.

..... ?

Erasmus: I'd like to buy two tickets, please.

..... ?

Tourist office: Yes, it is.

Erasmus: How long does the journey take?

Tourist office: How
would you like to pay? Credit card or cash?

Erasmus: I would like to pay by credit card.

.....

Tourist office: The bus leaves every 15 minutes. Enjoy your trip.

Erasmus: Thanks a lot. Have a good day.

VIDEOS

External Video Links

- <https://www.youtube.com/watch?v=j3J3sykmi5A&t=1s>
- <https://www.youtube.com/watch?v=6qcUT4zP3qs&t=203s>

